

**Questionnaire**  
**Vacuum lifting devices Jumbo**  
to create a quote

Schmalz Inc.  
5250-150 Old Wake Forest Rd  
Raleigh, NC 27609  
Tel (919) 713-0880  
Fax (919) 713-0883  
http://www.schmalz.com/us  
e-mail: info@schmalz.us



Company: ..... Name: ..... Street: ..... City/State/zip: .....	Email..... Tel: .....-.....-..... Fax: .....-.....-..... Date(m/d/y): .....	End User
Schmalz internal quote number:		

**Workpiece:**

1.1 Handling of (workpiece description): \_\_\_\_\_

1.2 Material: \_\_\_\_\_

2. Dimensions and weight of workpieces:

	Length	Width	Thickness	Weight
Maximum				
Minimum				

2.1 Cross-sectional profile:       round                       flat                       profile: \_\_\_\_\_

3. Surface texture:                       rough                       structured                       smooth

4. Special characteristics of the workpiece (e.g. holes, apertures, etc.; enclose drawing if necessary):

5. Surface quality (pollution):       none                       dry                       wet  
 oily                       dusty                       \_\_\_\_\_

6. Porosity:                       non-porous                       slightly porous                       very porous  
 must be determined by testing (send sample to Schmalz)

7. Temperature:      workpiece: \_\_\_\_\_ (°C / °F) environment: \_\_\_\_\_ (°C / °F)

**Handling:**

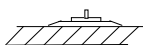
8. Working range      -Height at which workpiece is picked up:                      max: \_\_\_\_\_  
min: \_\_\_\_\_ .

-Height at which workpiece is released: max: \_\_\_\_\_                      min: \_\_\_\_\_ .

9. Room height \_\_\_\_\_ (Indicate max. available clear height from floor to lowest unmoveable obstructions).

**10. Type of handling:**

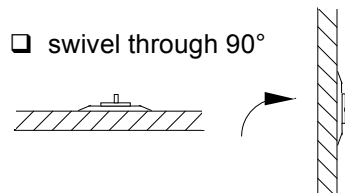
horizontal



vertical



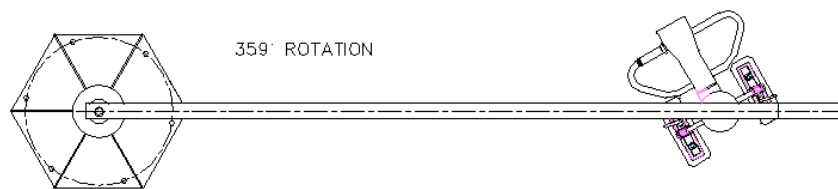
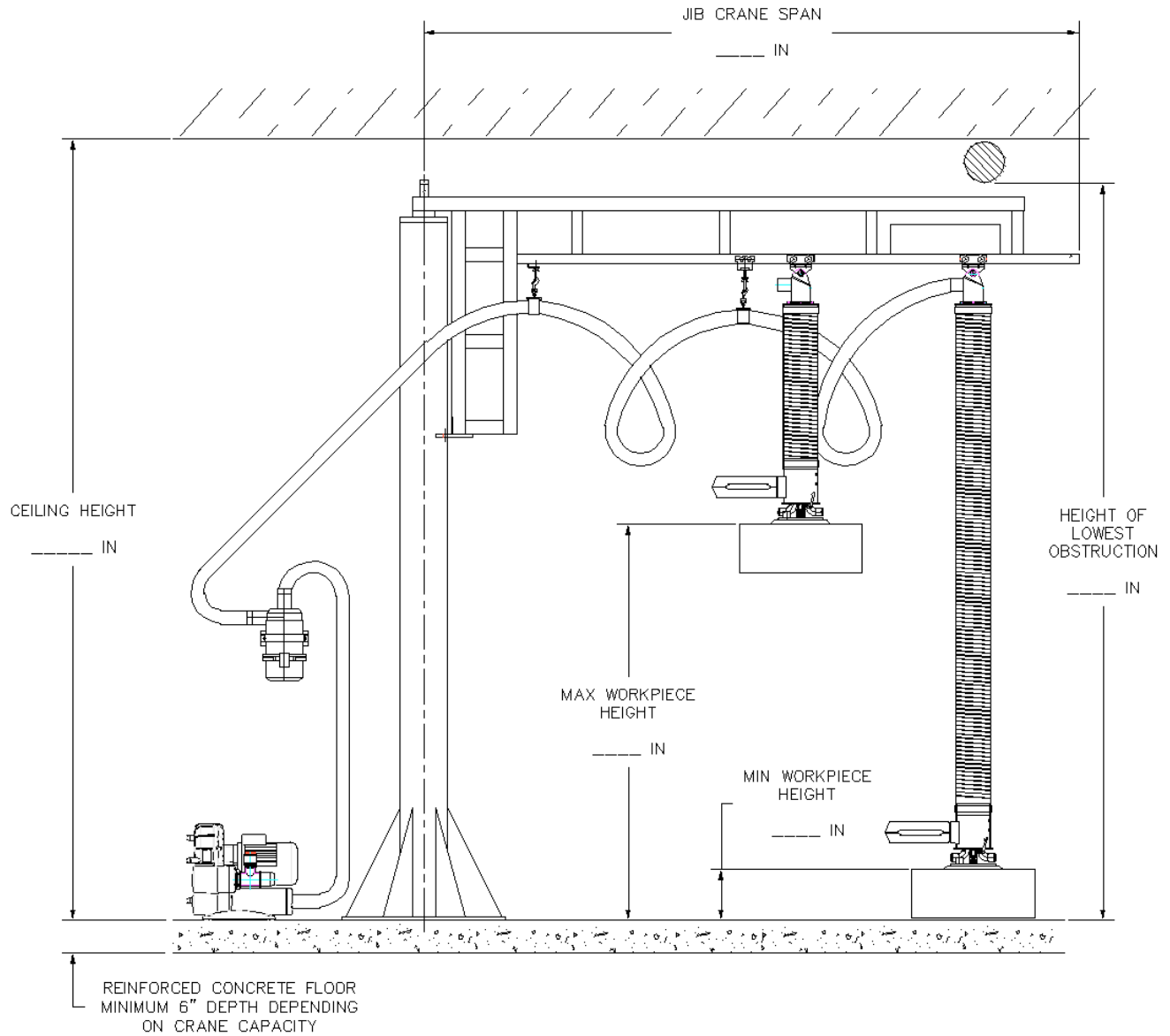
swivel through 90°





**Questionnaire**  
**Vacuum lifting devices Jumbo**  
to create a quote

Schmalz Inc.  
5250-150 Old Wake Forest Rd  
Raleigh, NC 27609  
Tel (919) 713-0880  
Fax (919) 713-0883  
<http://www.schmalz.com/us>  
e-mail: [info@schmalz.us](mailto:info@schmalz.us)



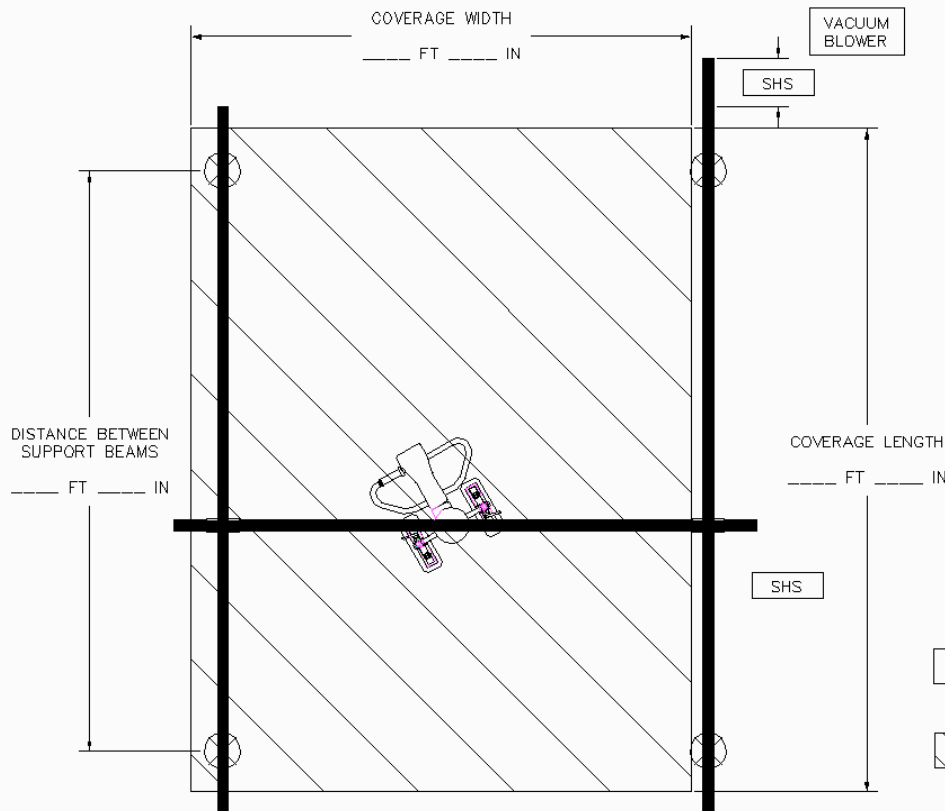
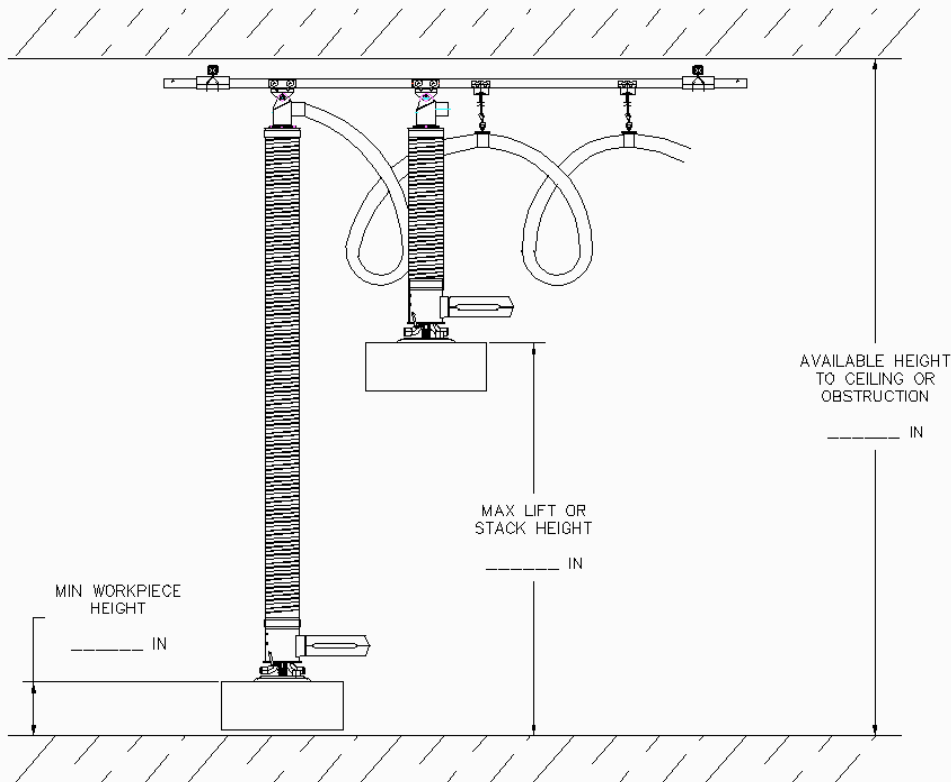
The illustration above shows a complete tube lifter system as an example.

Consists of:

- Vacuum blower
- Dust filter
- Lifting unit
- Ergo twist-grip control handle
- Suction pad
- Freestanding jib crane

**Questionnaire**  
**Vacuum lifting devices Jumbo**  
 to create a quote

Schmalz Inc.  
 5250-150 Old Wake Forest Rd  
 Raleigh, NC 27609  
 Tel (919) 713-0880  
 Fax (919) 713-0883  
 http://www.schmalz.com/us  
 e-mail: info@schmalz.us



**Note:** Coverage is lost on suction hose stack-up side of bridge. Hose stacks up in a separate section on the runway (on vacuum blower end).